



XF-STB-5

Installation of StudioRIP for DI

Installation of StudioRIP for DI

StudioRIP can drive the range of Heidelberg DI presses very well, but installation can be prob

One of the likely problems is that the inbuilt PC of the DI will be old and running an old OS with old network protocols. In this case you will have to make the PC of the StudioRIP compatible with this old PC before anything will work. NetBEUI may have to be added,

The biggest problem is configuration of the Host RIP PC. The DI needs to pick up the files from a PC with a specific Name, Workgroup, and folder location using network settings which are rather old.

In the case of the Classic press it uses the Net Beui protocol, which is no longer an option in Windows after XP.

If the existing RIP PC is still there and easy method of installation especially with the Classic is to simply let StudioRIP export the files to the existing active export folder of the old RIP.

If using the old PC is not desired, Then the new host PC should be configured to emulate IP address, Computer Name, WorkGroupName, Username and password and share names of the older PC.

ITEM	DEFAULT
Computer Name	QM_RIP1
WorkGroup	Heidelberg_DI
UserName	QM_PRESS1
Output Path for files	\OUTPUT\UNSKEWED
Share Name (share the output folder – not Unskewed folder)	BITMAP

It is understood all but the classic using TCP-IP connection, and later operating systems may be used (you may need to tweek some security policy settings to make it work depending on OS)

For the DI Classic things are more complicated because of the need for NetBeui protocol. There are ways around this :

1- Install on Windows XP

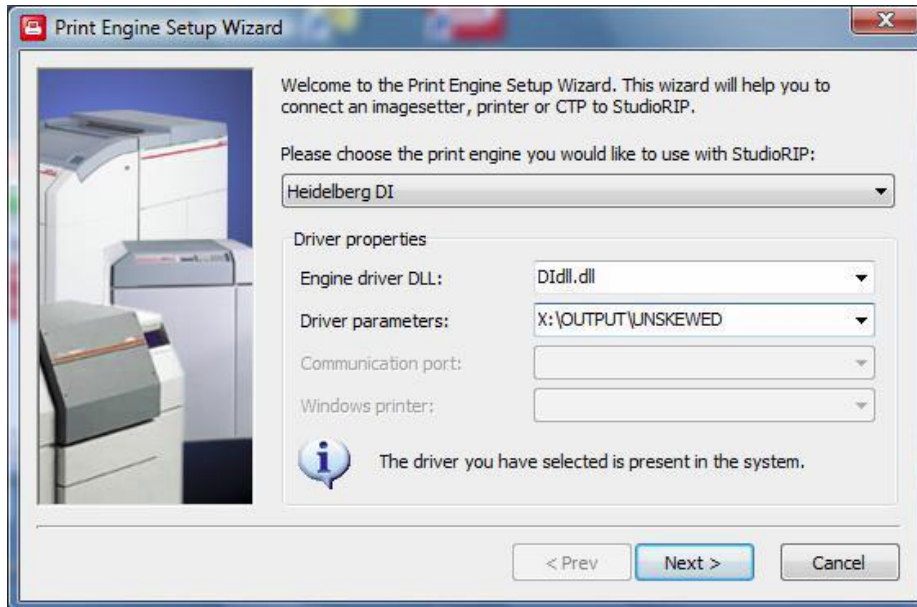
2- try to use hacks to run XP NetBeui on later operating systems – This has varying degrees of success and depends on OS and usually limited to 32 BIT OS

3- Install an XP virtual machine. We have heard a good method to use a modern PC with a Classic DI is to configure a virtual machine running XP on the host RIP PC, which is configured with NetBeui. This then acts as stand alone file server for the DI

Once you have the PCs compatible with each other you can install and configure the StudioRIP.

The first non-standard thing is that despite apparently working with a 3rd party TIFF catcher you will need to install the Print Manager. So do a Full install just as you would if you were installing on a CTP.

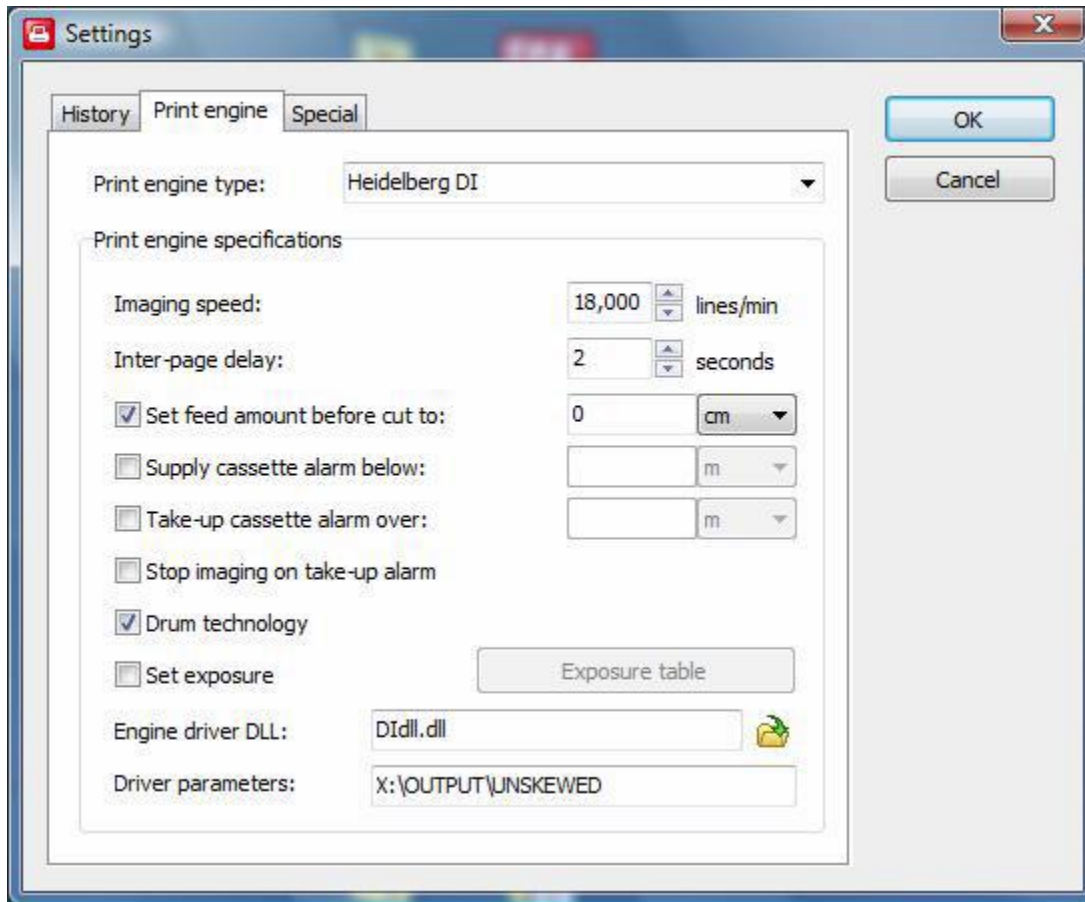
Once the StudioRIP is installed, run the PM for the first time; it will ask you to configure it.



Select the Heidelberg DI as the print engine.

The Drive parameters should be set to the path of the folder that will receive the files from StudioRIP.

If you check the Setting of the PM they should look like this:



You can now start the Server and Client and configure the Job styles in the usual way.