



XF STB-1

Custom Installations

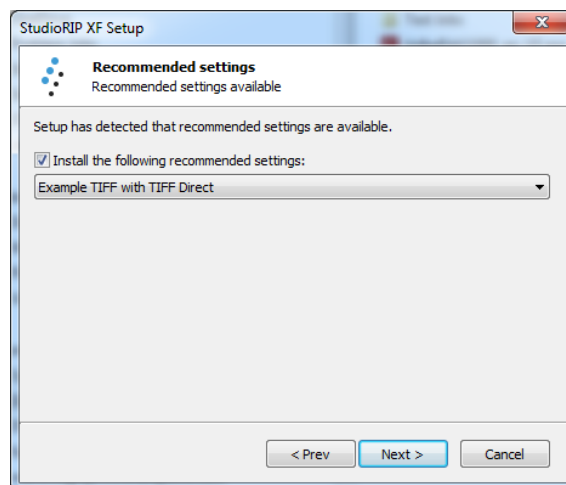
Custom Installations

For the benefit of our OEMs and also to assist engineers and advanced users in the field, it is now possible to do a Custom Installation i.e. an installation that already has all the settings preset.

The main purpose of this tool include :

- Build pre configured systems for specific device configurations
- Create emergency restore installers
- Assist in upgrading StudioRIP to a new PC platform

When doing a new installation (it doesn't work for updates) the StudioRIP installation program will look for a folder amongst the installation files called 'Custom'. If it finds one it will add an extra stage to the installation wizard and it is at this stage that the appropriate custom settings can be chosen.



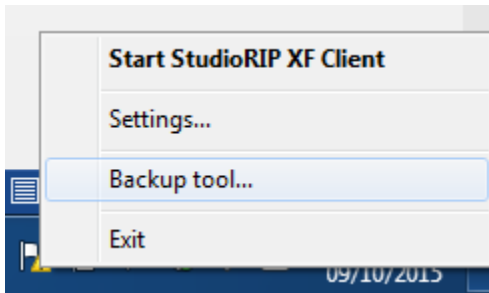
In the example above there is just one custom setting available in the drop-down but it is possible to add many sub-folders to the Custom folder and thereby growing the list.

When installing using such a configuration all your settings, jobstyles, calibration will be installed and the installer will also create the Print Managers for you.

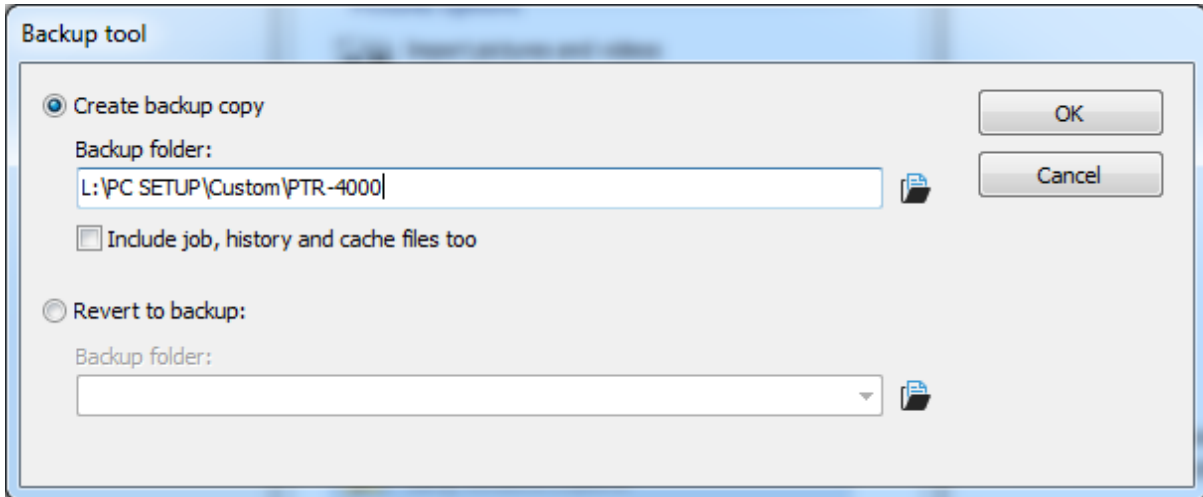
To create a custom installation a folder must be placed in the Custom folder and named appropriately. Some examples might be: PTR-4000 CTP or PTR-4000 + SureColor Proofer

Collect up all the relevant files from the StudioRIP store folder of the original installation. To do this you can use the backup utility in the StudioRIP Server.

Simply right click on the XF Server Icon and click on backup tool.



Then select your back up folder location, which will be inside the custom folder of your installer folder.



The option by default will not copy active jobs, history or cache files, as these could be 100s of GB in size.